



Colintraive Avenue, Glasgow

**** CLOSING DATE ARRANGED FOR MONDAY 3RD MARCH AT 12 NOON ****

****VIRTUAL TOUR - <http://vistabee.com/en/v/oh2py5> ****

Keys Estate Agents are delighted to offer to the market this unique detached bungalow. The property is an ideal family home in a popular residential area.

The accommodation comprises entrance hallway, fitted kitchen with a range of base and wall mounted storage units, a spacious south facing family lounge with aspects to the front of the property which gets an abundance of natural sunlight.

The accommodation benefits from 3 bedrooms, family bathroom and separate dining room.

The property is double glazed with gas central heating and also benefits from both a front and private rear garden located in this private development. Finally the accommodation boasts a large driveway and garage.

Key Features

Detached Bungalow

Popular Residential Area

Spacious South Facing
Family Lounge

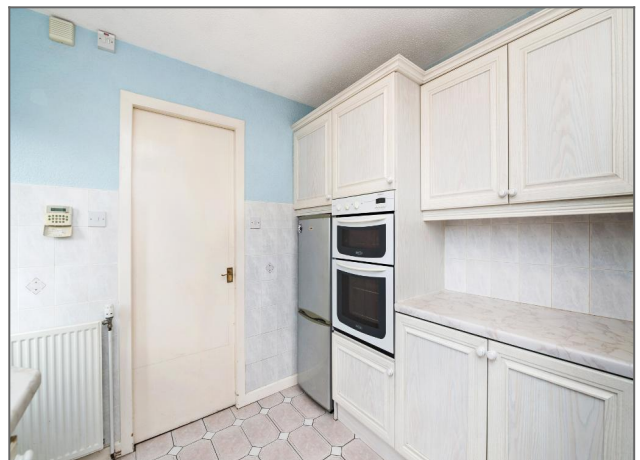
Separate Dining Room

3 Large Bedrooms

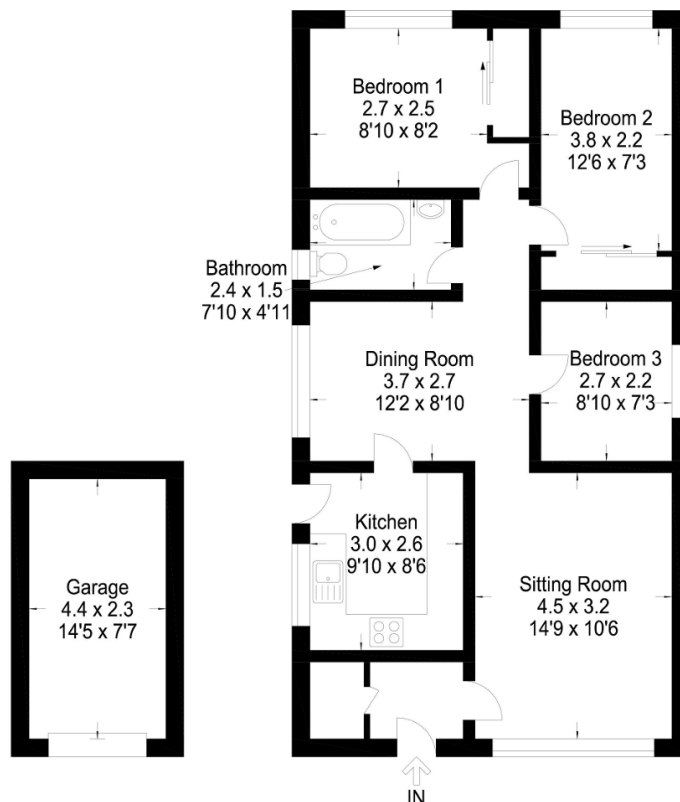
Double Glazed & Gas
Central Heating

Driveway with Garage

Family Bathroom

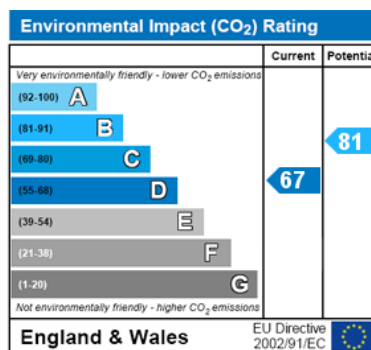
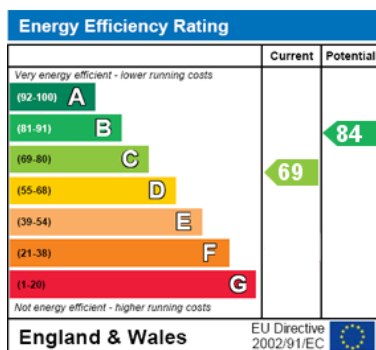






This plan is for layout guidance only and is not drawn to scale. Whilst every care is taken in the preparation of this plan, please check all dimension and shapes before making any decision reliant upon them. All room dimensions taken through cupboard/wardrobes to wall surface where possible or to surfaces indicated by arrow heads. (ID 110927)
VistaBee 2017

Energy Efficiency and Environmental Impact



Disclaimer: These particulars are thought to be materially correct though their accuracy is not guaranteed and they do not form part of any contract. All measurements are approximate and we have not tested any fitted appliances, electrical or plumbing installation or central heating systems.