



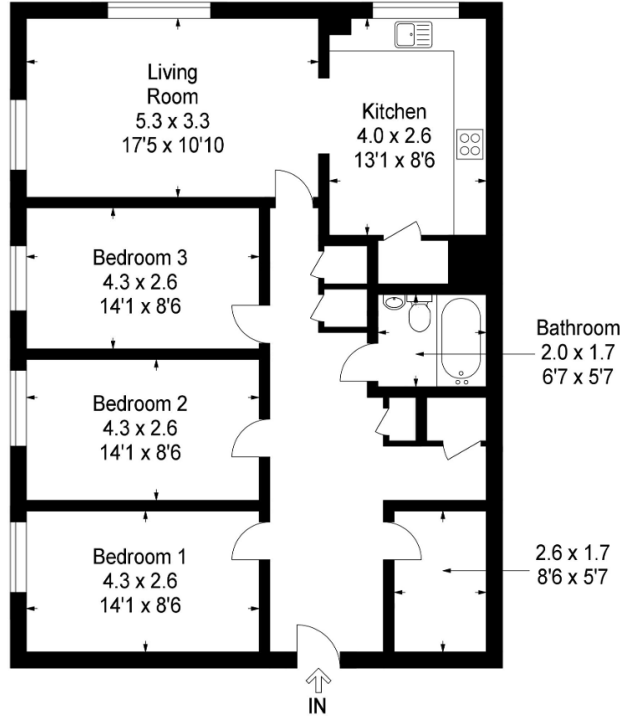
Liddoch Way, Rutherglen

SEE VIDEO Keys Estate Agents are delighted to offer to the market this larger than average flat set within Liddoch Way, Rutherglen. The flexible accommodation on offer comprises, large welcoming hallway leading to main apartments, bright spacious lounge with dual aspects and gives access to modern fitted breakfasting kitchen, three double bedrooms and modern fitted white bathroom. The property further benefits from gas central heating, double glazing, ample storage and fresh decor throughout. Early viewing recommended to appreciate the proportions and quality of this fine home on offer. A great opportunity for the first time buyer and investor.

Key Features

- Upper flat
- Large hallway
- Bright corner position lounge/dining
- Modern breakfasting kitchen
- Re-fitted bathroom
- 3 Double bedrooms
- Double glazing
- Gas central heating

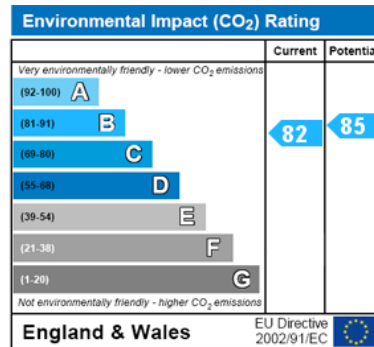
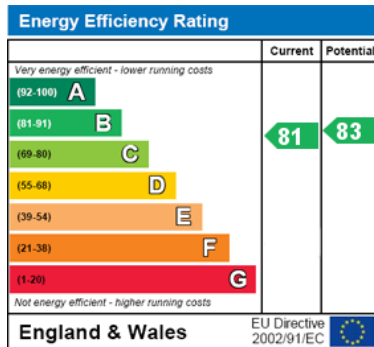




This plan is for layout guidance only and is not drawn to scale. Whilst every care is taken in the preparation of this plan, please check all dimension and shapes before making any decision reliant upon them. All room dimensions taken through cupboard/wardrobes to wall surface where possible or to surfaces indicated by arrow heads. (ID 110927)

VistaBee © 2017

Energy Efficiency and Environmental Impact



Disclaimer: These particulars are thought to be materially correct though their accuracy is not guaranteed and they do not form part of any contract. All measurements are approximate and we have not tested any fitted appliances, electrical or plumbing installation or central heating systems.