



London Road, Tollcross, Glasgow

SEE VIDEOKeys Estate Agents are pleased to offer to the market this traditional sandstone second floor flat, set with the small residential cul-de-sac of Silverdale Street, just off London road. The property has been recently refurbished by the current owner. The accommodation on offer comprises, spacious hallway providing access to all main apartments. Bright spacious bay window formation with fabulous viewings over looking the bowling green, modern re-fitted dining kitchen, modern re-fitted bathroom and larger than average double bedroom. The property further benefits from secure entry, central location and extras. A great opportunity for the first time buyer or investor. Early viewing recommended.

Key Features

Traditional second floor flat

Welcoming Hallway

Bright spacious bay windowed lounge

Modern fitted dining kitchen

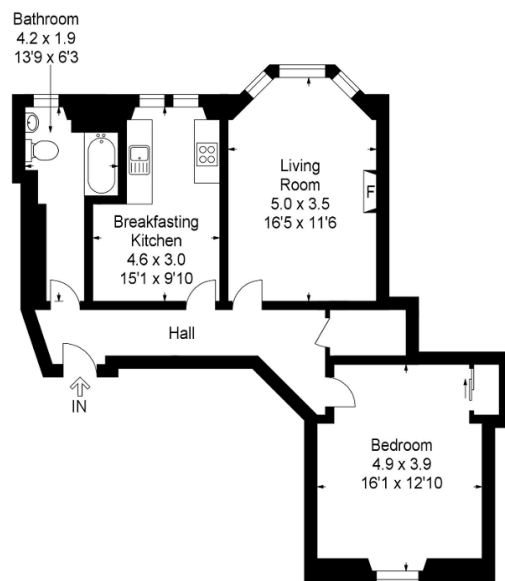
Modern fitted bathroom

Larger than average double bedroom

Gas central heating

Fabulous Views





VistaBee
DIGITAL CONTENT CREATION

This plan is for layout guidance only and is not drawn to scale. Whilst every care is taken in the preparation of this plan, please check all dimension and shapes before making any decision reliant upon them. All room dimensions taken through cupboard/wardrobes to wall surface where possible or to surfaces indicated by arrow heads. (ID 110927)

VistaBee © 2017

Disclaimer: These particulars are thought to be materially correct though their accuracy is not guaranteed and they do not form part of any contract. All measurements are approximate and we have not tested any fitted appliances, electrical or plumbing installation or central heating systems.